

Accessories for Hydraulic iron worker MX700

► Fitting nuts for punches MX700



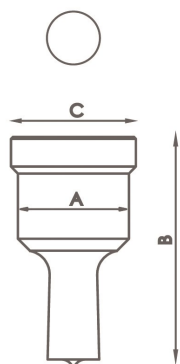
Reference	Type	Fitting nuts for punches	PRICE
120-02-02-00312	TAP28	Fitting nuts for punches N28 <i>Standard</i>	95,00 €
140-02-02-00011	TAP40	Fitting nuts for punches N40	95,00 €
140-02-02-00015	TAP50	Fitting nuts for punches N50	95,00 €
140-02-02-00014	TAP60	Fitting nuts for punches N60	95,00 €
140-02-02-00010	TAP75	Fitting nuts for punches N75	95,00 €
140-02-02-00012	TAP100	Fitting nuts for punches N100	95,00 €
125-02-02-00042	ATAP	Fitting part for TAP100	75,00 €

► Fitting parts for dies MX700



Reference	Type	Fitting for dies	PRICE
120-02-02-00313	N46	Fitting for dies N46 <i>Standard</i>	83,00 €
140-02-02-00019	N60	Fitting for dies N60	83,00 €
140-02-02-00028	N78	Fitting for dies N78	83,00 €
140-02-02-00044	N85	Fitting for dies N85	83,00 €
140-02-02-00029	N100	Base holder for dies N100	83,00 €
140-02-02-00027	N125	Base holder for dies N125	50,00 €

► Standard round punches MX700

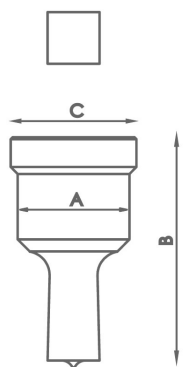


Type	Available sizes in mm Ø	A	B	C	PRICE
N28	3/3'5/4/4'5/5/5'5/6/6'5/7/7'5/8/8'5 9mm up to 28mm from 0'5 in 0'5mm	28 mm	58 mm	31,5 mm	17,80 €/uni
N40	29/30/31/32/33/34/35/36/37/38/39/40mm	40 mm	64 mm	43,5 mm	29,80 €/uni
N50	41/42/43/44/45/46/47/48/49/50mm	50 mm	58 mm	54 mm	35,90 €/uni
N60	52/54/56/58/60mm	60 mm	58 mm	64 mm	63,70 €/uni
N75	62/64/66/68/70/72/74mm	75 mm	58 mm	79 mm	63,70 €/uni
N100	76/78/80/82/84/86/88/90/92/94/96/98/100mm	100 mm	58 mm	104 mm	78,40 €/uni

For different sizes, please ask the manufacturer.

Accessories for Hydraulic iron worker MX700

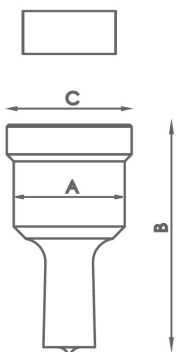
► Standard square punches MX700



Type	Available sizes in mm Ø	A	B	C	PRICE
N28	4/5/6/7/8/9/10/11/12/13/14/15/16/17/18/19/20mm	28 mm	58 mm	31,5 mm	39,30 €/uni
N40	21/22/24/26/28mm	40 mm	64 mm	43,5 mm	69,30 €/uni
N50	31/33/35mm	50 mm	58 mm	54 mm	76,70 €/uni
N75	40/44/48/53mm	75 mm	58 mm	79 mm	102,50 €/uni
N100	58/64/70mm	100 mm	58 mm	104 mm	128,30 €/uni

For different sizes, please ask the manufacturer.

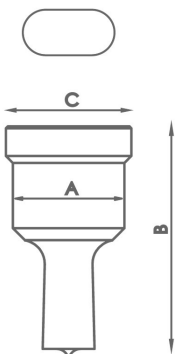
► Standard rectangular punches MX700



Type	Available sizes in mm Ø	A	B	C	PRICE
N28	7x10/7x15/9x13/9x19/11x17/11x23 13x19/15x21mm	28 mm	58 mm	31,5 mm	39,30 €/uni
N40	13x25/15x27/17x25/19x30/20x34mm	40 mm	64 mm	43,5 mm	69,30 €/uni
N50	25x43mm	50 mm	58 mm	54 mm	76,70 €/uni
N75	25x70mm	75 mm	58 mm	79 mm	102,50 €/uni
N100	25x96mm	100 mm	58 mm	104 mm	128,30 €/uni

For different sizes, please ask the manufacturer.

► Standard oval punches MX700

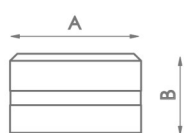


Type	Available sizes in mm Ø	A	B	C	PRICE
N28	7x10/7x15/7x20/9x13/9x19/11x17/11x23/13x18 13x22/13x27/15x20/15x24/15x27/17x22/17x26 19x26/21x27mm	28 mm	58 mm	31,5 mm	39,30 €/uni
N40	13x31/15x31/17x31/17x40/19x31 19x40/21x31/21x40mm	40 mm	64 mm	43,5 mm	69,30 €/uni
N50	25x45/25x50mm	50 mm	58 mm	54 mm	76,70 €/uni
N75	27x63/27x75mm	75 mm	58 mm	79 mm	102,50 €/uni
N100	30x87/30x100mm	100 mm	58 mm	104 mm	128,30 €/uni

For different sizes, please ask the manufacturer.

Accessories for Hydraulic iron worker MX700

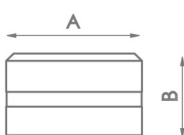
► Standard round dies MX700



Type	Available sizes in mm	A	B	PRICE
N46	3/3,5/4/4,5/5/5,5/6/6,5/7/7,5/8/8,5 9mm up to 28mm from 0,5 in 0,5mm	46 mm	28,5 mm	12,30 €/uni
N60	29/30/31/32/33/34/35/36/37/38/39/40mm	60 mm	32 mm	17,30 €/uni
N78	41/42/43/44/45/46/47/48/49/50mm	78 mm	28,5 mm	23,90 €/uni
N100	52/54/56/58/60/62/64/66/68/70/72/74mm	100 mm	28,5 mm	44,50 €/uni
N125	76/78/80/82/84/86/88/90/92/94/96/98/100mm	125 mm	28,5 mm	76,20 €/uni

For different sizes, please ask the manufacturers.

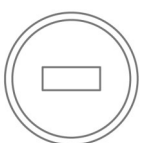
► Standard square dies MX700



Type	Available sizes in mm	A	B	PRICE
N46	4/5/6/7/8/9/10/11/12/13/14/15/16/17/18/19/20mm	46 mm	28,5 mm	47,10 €/uni
N60	21/22/24/26/28mm	60 mm	32 mm	55,30 €/uni
N78	31/33/35mm	78 mm	28,5 mm	67,80 €/uni
N100	40/44/48/53mm	100 mm	28,5 mm	79,60 €/uni
N125	58/64/70mm	125 mm	28,5 mm	130,00 €/uni

For different sizes, please ask the manufacturers.

► Standard rectangular dies MX700

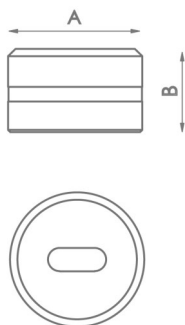


Type	Available sizes in mm	A	B	PRICE
N46	7x10/7x15/9x13/9x19/11x17/11x23/13x19/13x25/ 15x21mm	46 mm	28,5 mm	47,00 €/uni
N60	15x27/17x25/19x30/20x34mm	60 mm	32 mm	55,30 €/uni
N78	25x43mm	78 mm	28,5 mm	67,80 €/uni
N100	25x70mm	100 mm	28,5 mm	79,60 €/uni
N125	25x96mm	125 mm	28,5 mm	130,00 €/uni

For different sizes, please ask the manufacturers.

Accessories for Hydraulic iron worker MX700

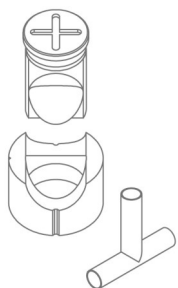
► Oval dies MX700



Type	Available sizes in mm	A	B	PRICE
N46	7x10/7x15/7x20/9x13/9x19/11x17/11x23/13x18/13x22/13x27 15x20/15x24/15x27/17x22/17x26/19x26/21x27mm	46 mm	28,5 mm	30,30 €/uni
N60	13x31/15x31/17x31/17x40/19x31/19x40/21x31/21x40mm	60 mm	32 mm	38,50 €/uni
N78	25x45/25x50mm	78 mm	28,5 mm	51,20 €/uni
N100	27x63/27x75mm	100 mm	28,5 mm	63,00 €/uni
N125	30x87/30x100mm	125 mm	28,5 mm	113,50 €/uni

For different sizes, please ask the manufacturers.

► Tube notching tooling MX700



Reference	Available sizes in mm	Required fitting		PRICE
MAN28	Tube from 16 to 28mm	TAP 28	CAB 46	250,00 €/uni
MAN40	Tube from 28,5 to 40mm	TAP 40	CAB 60	317,00 €/uni
MAN50	Tube from 40,5 to 50mm	TAP 50	CAB 78	385,00 €/uni
MAN60	Tube from 50,5 to 60mm	TAP 60	CAB 85	465,00 €/uni

For different sizes, please ask the manufacturers.

► Corner rounding tooling MX700

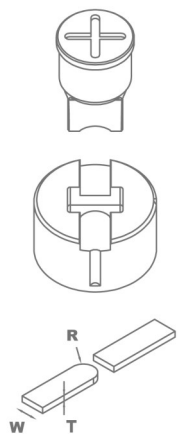


Reference	Available sizes in mm	Required fitting		PRICE
MRE28	Radius from 3 to 15mm	TAP 28	CAB 46	256,00 €/uni
MRE40	Radius from 16 to 26mm	TAP 40	CAB 60	367,00 €/uni
MRE50	Radius from 26,5 to 32mm	TAP 50	CAB 78	417,00 €/uni

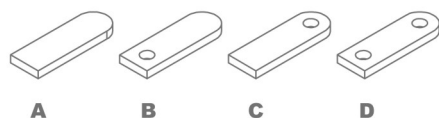
For different sizes, please ask the manufacturers.

Accessories for Hydraulic iron worker MX700

► Flat bar round end tooling R1



Reference	Model	Width size	Required fitting	PRICE
MOR1-35A	A	From 20 to 35mm	TAP28 / TAP40	428,00 €/uni
MOR1-35B	B	From 20 to 35mm	TAP28 / TAP40	556,00 €/uni
MOR1-35C	C	From 20 to 35mm	TAP28 / TAP40	556,00 €/uni
MOR1-35D	D	From 20 to 35mm	TAP28 / TAP40	645,00 €/uni
MOR1-50A	A	From 40 to 50mm	TAP50 / TAP60 with ATAP	462,00 €/uni
MOR1-50B	B	From 40 to 50mm	TAP50 / TAP60 with ATAP	578,00 €/uni
MOR1-50C	C	From 40 to 50mm	TAP50 / TAP60 with ATAP	578,00 €/uni
MOR1-50D	D	From 40 to 50mm	TAP50 / TAP60 with ATAP	685,00 €/uni



For different sizes, please ask the manufacturer.

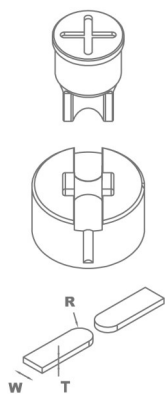
When placing order it must be specified the REFERENCE, MODEL, R (radius), W (flat bar width), T (flat bar thickness)

In models B, C and D specify diameter of the hole.

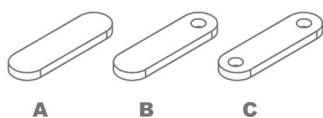
The ear shaped legth is always adjustable.

Production capacity: 450 to 600 parts per hour.

► Flat bar round end tooling R2



Reference	Model	Width size	Required fitting	PRICE
MOR2-35A	A	From 20 to 35mm	TAP28 / TAP40	428,00 €/uni
MOR2-35B	B	From 20 to 35mm	TAP28 / TAP40	556,00 €/uni
MOR2-35C	C	From 20 to 35mm	TAP28 / TAP40	645,00 €/uni
MOR2-50A	A	From 40 to 50mm	TAP50 / TAP60 with ATAP	462,00 €/uni
MOR2-50B	B	From 40 to 50mm	TAP50 / TAP60 with ATAP	578,00 €/uni
MOR2-50C	C	From 40 to 50mm	TAP50 / TAP60 with ATAP	685,00 €/uni



For different sizes, please ask the manufacturer.

When placing order it must be specified the REFERENCE, MODEL, R (radius), W (flat bar width), T (flat bar thickness)

In models B and C specify hole diameter.

The ear shaped legth is always adjustable.

Production capacity: 450 to 600 parts per hour.