

### SPECIFICATIONS OF TUBES TO BE BENT - SECTION BENDING MACHINES

Fill in the following form with the material specifications.

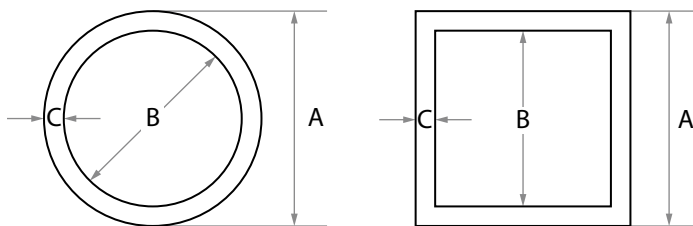
#### 1. Tube sizes

Tube O.D. (A) mm.

Tube I.D (B) mm.

Tube Thickness (C) mm.

Round tube or Square tube



**\* Important:** Dimensions will be indicated in millimeters as there are different types of inches and regulations.

#### 2. Mechanical strength. Hardness and type of material.

Consult your supplier for the details concerning hardness and material.

Aluminum 30 Kg/mm (300 N/mm )

Mild Steel 45 Kg/mm (450 N/mm )

Brass 25 Kg/mm (250 N/mm )

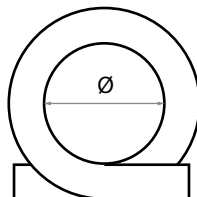
Stainless Steel 65 Kg/mm (850 N/mm )

Copper 22 Kg/mm (220 N/mm )

#### 3. Minimum Diameter of the bent.

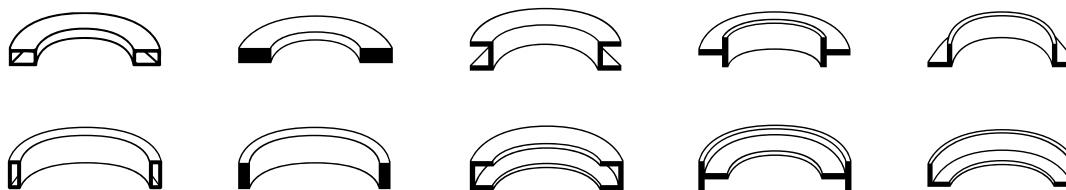
Minimum diameter is sized on the inner side of the bent, as shown in the following picture:

Diameter (Ø) mm.



#### 4. Bending direction according to the type of profile

If the profile to be bent is not round or square, indicate the type of profile and the direction of bending



#### Possibility for the customer to provide Nargesa with the following material:

Technical drawing	YES	NO
Ship a finished bent sample	YES	NO
Ship raw material for testing	YES	NO

#### Number of pieces to be manufactured per day

#### Prada Nargesa recommends

To ship a sample and material so our technicians can test the operations. In case it is a non-standard material or when the manufacturer considers it necessary.

#### Prada Nargesa commits

To make a test and send the resulting sample to the customer, in case it is necessary, including a demo video of the process in order to ask the customer for consent and approval.