



HYDRAULIC PUNCHING MACHINE

MX340G CNC

 4.0 Technology



NEW



50 years
manufacturing industrial machinery



HOW IT WORKS VIDEO

Video on how the machine works

GET A QUOTE

Please complete the following form. We'll contact you in less than 24 hours.

Business days

SOME OF OUR CUSTOMERS

Our customer's endorsement is our best business card



CERTIFICATES AND ACCREDITATIONS

Some of the certificates that support our processes and benefit our customers



INNOVATIVE SME

Valid until May 31st 2026



**CONCESSION
OF AUTHORIZED
EXPORTER
AUTHORIZATION**

ESEAOR23000312

Power, precision and versatility in a single machine: Nargesa MX340G CNC

The main strength lies in its **complete versatility** which enables **multiple operations** using a single device: **punching, bending, cutting, blunting, flaring...** This **multi-purpose capability** makes the **MX340G CNC** an **essential tool for any industrial environment** seeking efficiency without compromising precision.

Many of our customers use them to **adapt their own dies previously used in eccentric presses**, thereby minimizing noise and maximizing operator safety.

With a robust structure, a **wide 180 mm gooseneck, 100 mm stroke and generous work table**, the MX340G CNC stands out due to its immense versatility.

It allows you to perform **multiple operations** such as **punching** in different profiles (sheet metal, pipes, angles, UPN, IPN...), as well as **bending, cutting, deep drawing, stamping, flaring...** Its ability to adapt to a **wide variety of dies** — including those manufactured by the customer — makes it a flexible solution for all types of production needs.

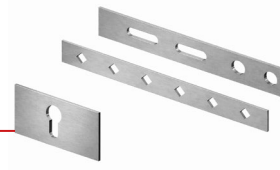
Designed to improve efficiency in the work environment, this version includes **built-in LED lighting** which provides optimal visibility of the work area, increasing the operator's accuracy and safety. In addition, it includes **shelving for the organized storage of punches and dies**, facilitating access to tools and reducing setup times without interfering with the production flow. Powered by an advanced **intuitive CNC control for simplified programming**, all of this **automates processes and increases productivity** to a new level.

The **MX340G** is designed as an essential machine for companies in the metal sector, both for mass production and for customized work.



EXAMPLES OF WORK PERFORMED WITH THE MX340G CNC HYDRAULIC PUNCHING

Punching in different shapes — round, square, rectangular, oval, etc. — for any manufacturing need



Flaring pipes to facilitate precise assemblies and clean joints



Rounding corners in flat bars and profiles to improve finishes and avoid sharp edges



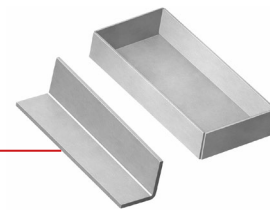
Manufacturing of turnbuckles for structural reinforcement in doors, frames and metal structures



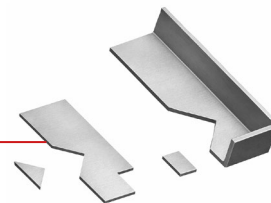
Cutting of angled and flat bars with precision to prepare parts ready for subsequent assembly



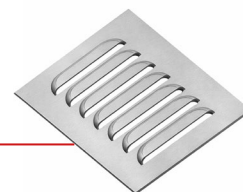
Bending operations that allow for the quick and precise shaping of pieces with different angles and geometries



Trimming of profiles and flat bars to remove excess material and adjust parts



Manufacturing of ventilation grilles through repetitive and precise punching of sheet metal or flat bar



The production of handles and joining elements by cutting and forming in a single operation



TECHNICAL CHARACTERISTICS

- > Hydraulic power: **40 Tn.**
- > Motor power: **2.2 kW / 3 CV (HP)**
- > Operating speed: **7.1 mm/sec.**
- > Reverse speed: **9.3 mm/sec.**
- > Punch path: **100 mm**
- > Gooseneck: **180 mm**
- > Table dimensions: **245x265 mm**
- > **Vertical descent, not pendular**
- > Drive with **safety pedal**
- > **Features a very intuitive CNC ESA 820 machine**
- > Editable die and punch library
- > Automatic programming of limit switches
- > Automatic tonnage calculation
- > Programmable bending angle
- > **Alarm diagnosis**
- > 3-phase voltage: **230/400 V.**

PUNCHING

- > **All kinds of punches with different shapes** can be supplied: round, square, rectangular, oval, bowler hat, etc.

OTHER APPLICATIONS

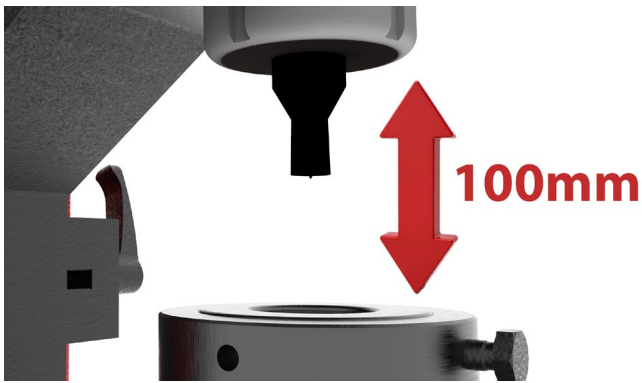
- > It has **over 40 standard dies** to perform different tasks such as: **embedding, bending, cutting, widening/narrowing pipes, etc.**
- > If required by the customer, **we can manufacture custom dies to produce all types of parts.**

ADVANTAGES

- > **Vertical descent, not a pendulum descent.** Unlike other brands, the **180 mm gooseneck, 100 mm stroke and large work table** make it possible to work with **larger pieces and couple any type of die.**
- > The **limit switch optimization, angle control** and the **calculation of required tonnage** significantly increase productivity.

**All Nargesa products are adapted to EC industrial machinery manufacturing standards.*

*** All of our products are made at our facilities in Spain. The hydraulic and electronic components are completely standard and from the best leading European brands with technical assistance services throughout the world: Rexroth, Bosch, Roquet, Schneider Electric, LG, Telemecanique, Pizzato...*

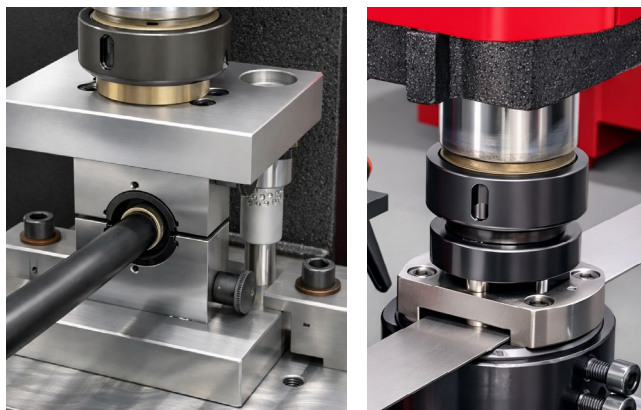
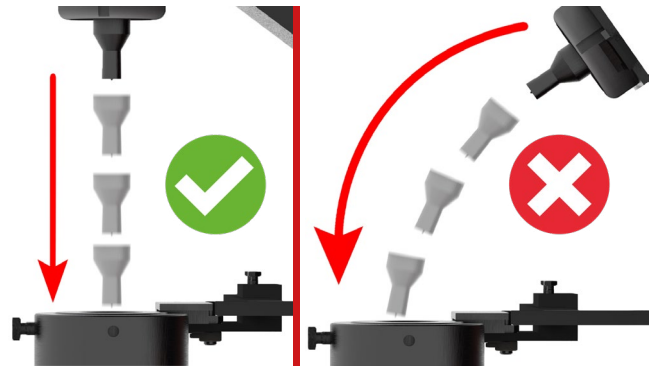


LONGER PISTON STROKE

With a **100 mm stroke**—superior to the usual ~60 mm—the MX340G CNC **eliminates operational restrictions**. It makes it possible to work with tools that require a longer travel distance, expanding the applications and versatility of the machine.

VERTICAL PISTON DESCENT

Unlike pendulum systems, the MX340G CNC performs a **vertical descent**, ensuring a **fully axial force** and **eliminating lateral forces**. This improves alignment, punching quality and extends **tool service life up to 5 times**. It also enables the use of a wide variety of dies that require this vertical descent to be coupled.



MAXIMUM VERSATILITY AND QUICK TOOL CHANGE

The MX340G CNC can adapt **in-house dies**, even from eccentric presses, **thereby improving working conditions, reducing noise and increasing safety**. The quick-change system **replaces tools in a maximum of 30 seconds**, which minimizes downtime. In addition, a single station **makes it possible to work with multiple configurations** for versatility far superior to traditional systems.



CNC STROKE OPTIMIZATION

The machine **automatically identifies the start and end points of the piston route, adjusting the stroke to the minimum** in each cycle. This dynamic adjustment eliminates unnecessary movements, reducing downtime, and preventing human errors and tool breakage.

ANGLE CONTROL

In bending mode, the operator **enters the desired angle directly into the CNC control and the machine will automatically execute the operation with complete precision.** This makes it possible to **obtain the exact angle from the very first piece**, guaranteeing repeatable results by minimizing adjustments and trial and error operations.



CALCULATION OF REQUIRED TONNAGE

The CNC system **automatically determines the required tonnage** in each operation depending on the material, thickness and characteristics of the punch.

The newest
ECOMODE
of our latest products helps
you save energy all while
contributing to environmental
conservation.

We are well aware of the importance of saving energy. This is why our new machinery features an **ECO Mode** which automatically disconnects the electric parts consuming the most energy if it detects any period of inactivity. All you have to do is press the pedal to restart production. We believe **this feature is of vital importance to our customers for their savings as well as for the sustainability of the planet. After all, we're a company that's completely committed to the environment.**



4.0 connectivity allows us to connect to your machine in a matter of minutes to provide you with immediate support.

Whenever a customer agrees, the manufacturer may remotely connect to their machine to do any **software updates** completely free of cost and detect any anomalies in the machine without needing to travel to the machine site. **Customers are notified when preventive maintenance** must be done on the machine along with many other advantageous features.



CONTROL PANEL ESA S820

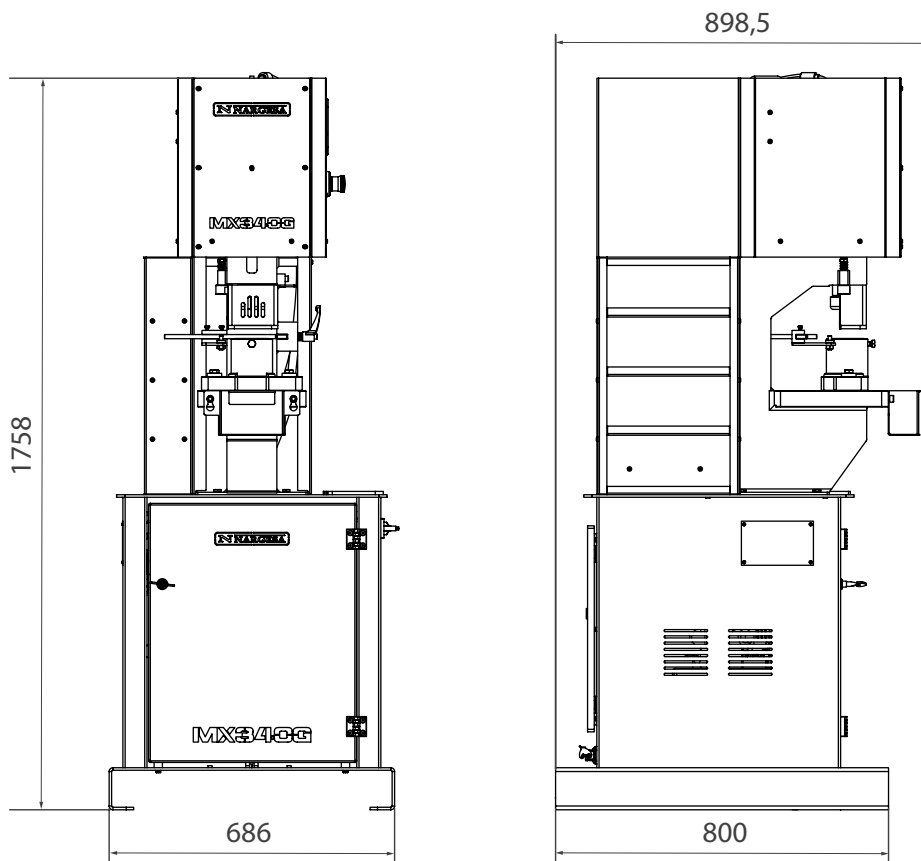
Nargesesa punching machines are controlled with a very intuitive and easy-to-use 7" **color touchscreen with the latest 4.0 technology, and more comfortable and precise regulation.**

You simply enter the material and thickness, choose the punch and die from the library, and the control program will automatically handle all the other parameters.

These are some of the most relevant features of this control system.

- > Stores up to 10,000 programs.
- > Dimensions may be programmed in inches or millimeters.
- > A library of available dies and punches with the possibility of programming new ones.
- > A library of available materials and thicknesses with the possibility of programming new ones.
- > The CNC can be supplied in more than 20 different languages.
- > Automatic control of the bending angle, in degrees.
- > An operating speed of 7.1 mm/s and a return speed of 9.3 mm/s.
- > Manual or automatic operation.
- > Unit counter.
- > 4.0 technology.
- > On-screen alarm diagnostics.
- > Preventive maintenance warning.
- > The manufacturer can connect remotely without needing to be on site.
- > 7" color touchscreen with 800x480 resolution.
- > 128 MB silicon disk.
- > 2 analog inputs, 12 bit resolution.
- > 16 digital inputs (24 VDC).
- > 16 digital outputs (24 VCC, 0.7 A max.) Protected against overloads and short circuits.
- > 1 RS232 serial port.
- > 1 CAN port with 9 D-Sub F connector contacts.
- > 24 VDC power source.
- > 1 USB port.
- > 1 Ethernet port.

OUTSIDE DIMENSIONS



PACKAGING CHARACTERISTICS

- Tariff Item Code: 84624200
- The machine is shipped fully assembled.
- Pallet made of steel and 3 layer cardboard box suitable for seafreight.
- Optional: Fumigated wooden box NIMF15.

MX340G CNC

Width	700 mm
Depth	800 mm
Height	1800 mm
Volume	1 m ³
Net Weight	628 Kg.
Gross Weight	647 Kg.

STANDARD ACCESSORIES SUPPLIED WITH THE MACHINE

Fitting nut for punches and base holder for dies



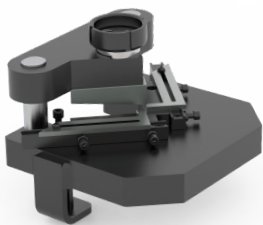
> All nargesa hydraulic punching machines are equipped with the punching tool that includes the fitting nut for punches and the base holder for dies. The rest of accessories are optional, which means each customer equips his machine as desired.



*Fitting nut for punches and
base holder for dies.*

OPTIONAL ACCESSORIES

Stripper tooling 90° adjustable 100x100



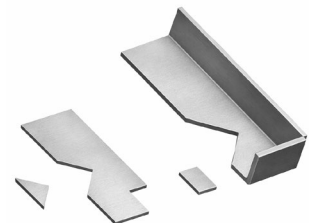
REF: 140-02-01-00005

- > Sheet stripping tooling, angle, etc.
- > Adjustable up to 100x100mm to 90° fix.

Max. Cutting capacity: 100x100x4mm.

Weight: 35 kg.

Optional tooling.



Pround punches and dies, square punches, oval punches, rectangular



> In nargesa we have a wide catalogue of punches and dies of all kinds. If the size the customer needs is not in the list, we can make it.

In the PDF file you could see all the sizes we have.



Tooling for punching angle and U profile



REF: 140-02-01-00031

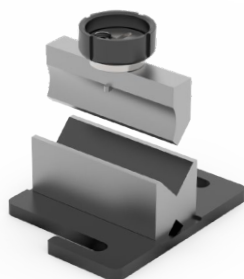
> Tooling to punch angles.
> Exchangeable punches and dies of different sizes.

Optional tooling.



Max. Hole diameter	Min. Hole diameter	Weight
28mm	2mm	9 Kg.

Folding tooling 170mm.



REF: 140-02-01-00004

> Tooling to fold steel sheet and flat bar up to 170mm. Punch 88°.
> Die with 56mm and V 26mm V's.

Optional tooling.



Max. Folding length	Max. Thickness	Weight
170mm	8 a 12mm	12 Kg.

Flat bar cutting tooling 100x10mm.



REF: 140-02-01-00002

> Tooling to cut metal sheet or flat bar from 0.8mm up to 10mm thickness.

Max. Cutting capacity: 100x10mm.

Weight: 28 kg.

Optional tooling.



Tooling to round off corners



> Tooling to round off the corners in metals sheets of different radius.

In the PDF file you will be able to see all kinds we have.

Optional tooling.



Arrows tooling for pipes



REF: 140-02-01-00007

> Tooling to flatten and cut pipe in arrow shape. Suitable to different diameters.

Optional Tooling.



Max. Pipe diameter	Min. Pipe diameter	Weight
30x2mm	10x2mm	19 Kg.

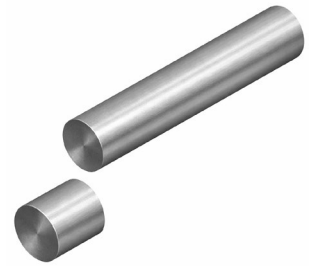
Round bar cutting tooling



REF: 140-02-01-00035

> Tooling to cut round solid bar from 3mm up to 35mm.

Optional Tooling.



Max. Cutting diameter	Min. Cutting diameter	Weight
35mm	3mm	15 Kg.

Punch and die for locks



REF: 140-02-01-00036

> Punch and die to make locks holes in metal sheet.

> Necessary complements: cab60 and tap40.

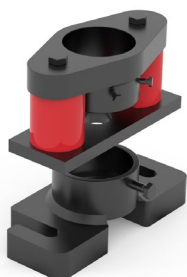
Max. Thickness: 6mm

Weight: 1 kg

Optional tooling.



Flattening extractor



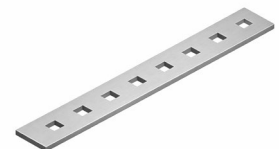
REF: 140-02-01-00039

> Extractor that acts like flattening flat bars while punching so they cannot be distorted during that process.

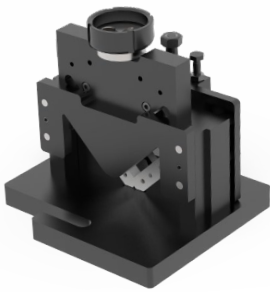
Max. Thickness for flat bar or solid bar: 15mm.

Weight: 15 kg.

Optional tooling.



Angle cutting tooling



REF: 140-02-01-00001

> Tooling to cut angle to 90° and 45°.

Optional tooling.



Max straight cutting capacity	Max. Mitre cutting capacity	Weight
60x60mm	50x50	32 Kg.

Arrow tooling for metal sheet



REF: 140-02-01-00006

> Tooling to punch steel sheet in arrow shape for fencing.

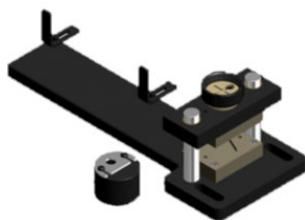
Max. Sheet thickness: 3mm.

Weight:21 kg.

Optional tooling.



Pipe ends fencing tooling



REF: 140-02-01-00040

> Tooling to flatten and punch the extreme of pipes for fencing.

> Admits different pipes diameters.

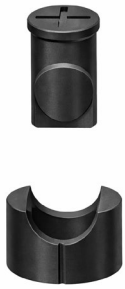
> The hole size is exchangeable.

Optional tooling.



Max. Pipe diameter	Min. Pipe diameter	Hole diameter	Weight
50mm	10mm	Intercambiable	23 Kg.

Pipe notching tooling



> Pipe notching tooling from Ø16 to Ø60mm. It consists of cutting the extreme of a pipe so it can be joined to another one perpendicularly.

In the PDF file you will be able to see all kinds and sizes we have.



Flat bar round end tooling



> Tooling to make all kinds of flat bars with round ends, with or without hole, straight, round... Very used as handles, stands, etc...

> Starting from a metal strip, a piece with the desired length comes out of it with every stroke.

In the PDF file you will see all kinds of shapes and sizes we have.



Ventilation grill tooling



REF: 140-02-01-00010

> Tooling to make ventilation grill in metal sheet.

> With adjustable punching operations since they're made one by one.

Optional tooling.



Punching sizes	Max. Thickness	Weight
100x20mm	2mm	20 Kg.



MX340G

- > Hydraulic power: 40 Tn.
- > Working speed: 7,1 mm/sec.
- > Return speed: 9,3 mm/sec.
- > Punch displacement: 100 mm.
- > Neck: 180 mm.
- > Table Dimensions 245x265 mm.
- > Vertical descent, not pendular.
- > Activation with safety pedal.
- > Built-in ESA 820 CNC control.
- > Ethernet 4.0 connection.
- > Alarm diagnose.
- > Motor power: 2,2 KW/ 3 HP.

MX700

- > Hydraulic power: 70 Tn.
- > Working speed: 9 mm/sec.
- > Return speed: 14 mm/sec.
- > Punch displacement: 160 mm.
- > Neck: 350 mm.
- > Table dimensions 600x350 mm.
- > Swinging front safety protection.
- > Activation with safety pedal.
- > Digital display.
- > Parts and strokes counter.
- > Alarm diagnose.
- > Motor power: 5,5 KW/ 7,5 HP.



NUESTRA GAMA DE PRODUCTOS



IRON WORKERS



NON-MANDREL PIPE BENDER



HORIZONTAL PRESS BRAKES



SECTION BENDING MACHINES



CNC SECTION BENDING MACHINES



LASER WELDING EQUIPMENT



TWISTING/SCROLL BENDING MACHINES



HYDRAULIC PRESS BRAKES



HYDRAULIC SHEAR MACHINES



GAS FORGES



IRON EMBOSSING MACHINES



END WROUGHT IRON MACHINES



BROACHING MACHINES



POWER HAMMERS



BLACKSMITH FORGING PRESS

WARRANTY

Nargesa machines have 3 years warranty provided that the customer registers it in our website. Otherwise it would be only one year warranty. This one encloses any manufacturing default all along these 3 years for components. Any misuse is excluded from this condition. Labor, back and forth shipping and any eventual repair, are not included in this warranty.

Partner companies.



Airpharm

SHIPMENT EVERYWHERE

Nargesa will arrange transport up to final destination, whenever the customers asks for so. There is also the possibility for the customer to arrange the shipment himself with his own agency.

TECHNICAL ASSISTANCE

All our customers have access to technical support quickly and efficiently.

90% of incidences are solved out on the phone, mail, Skype or video conferencing in less than 24hours. In case of needing presencial technical assistance, we may as well send a technician to the customer's facilities.

Follow us

PRADA NARGESA, S.L.

Ctra. De Garrigàs a Sant Miquel s/n
17476 Palau de Santa Eulalia (Girona) Spain
Tel. +34 972 568 085

www.nargesa.com

nargesa@nargesa.com



This information might undergo changes