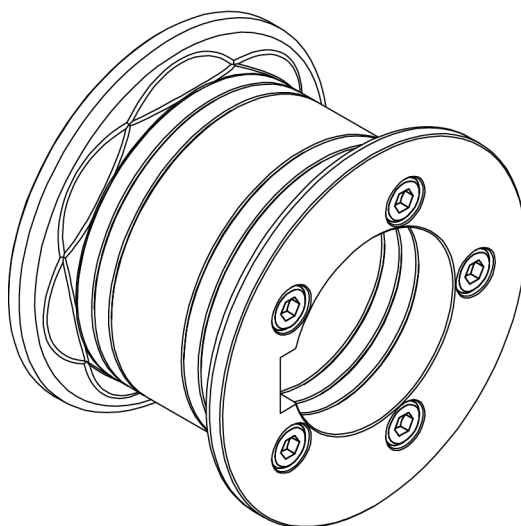
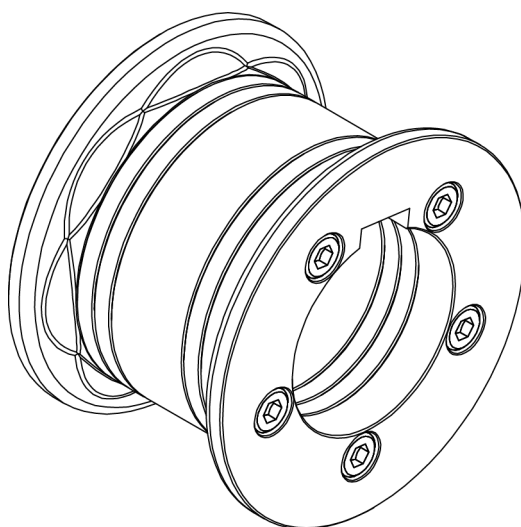


**Set of embossing rollers
for 1" 1/2, 2" and 2" 1/2 inches pipes**

Ref. 140-11-01-00507

NOA60



TECHNICAL FEATURES

PRADA NARGESA, S.L

Ctra. de Garrigàs a Sant Miquel s/n
17476 Palau de Santa Eulàlia (GIRONA) SPAIN

Tel. 972 568085 - nargesa@nargesa.com

www.nargesa.com

INDEX

1. Tooling description	3
2. Elements identification	4
2.1. Upper roller	4
2.2. Lower Roller	5
3. Rollers assembling	6
3.1. Rollers assembling for 1" 1/2 inches pipe	6
3.2. Rollers assembling for 2" inches pipe	7
3.3. Rollers assembling for 2" 1/2 inches pipe	8
4. Our range of rollers for pipe embossing	9

1. Tooling description

- ▶ Set of embossing rollers for 1" 1/2, 2" and 2" 1/2 inches pipes

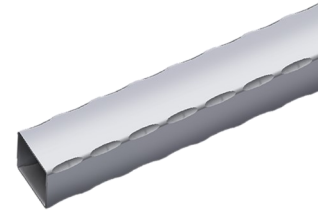
Ref: 140-11-01-00507



Set of sectioned rollers to emboss different square or rectangular pipe sizes with the same set. Adjustable to the following pipes:

Square pipes: 1" 1/2, 2" and 2" 1/2 inches

Rectangular pipes: 1"1/2x3/4", 1"1/2x1", 2"x1", 2"x1"1/4, 2"x1"1/2, 2"1/2x1"1/2 inches



Guide 140-11-01-00508, 140-11-01-00509 or 140-11-01-00510 is required

Ask the manufacturer about different dimensions

Set per machine	Material minimum thickness suggested by manufacturer	Weight
1	3 mm	6 Kg

- ▶ Inlet guide for 1" 1/2 inches pipe



Ref: 140-11-01-00508

Inlet guide for 1" 1/2 inches pipe

Weight: 2,6 Kg

- ▶ Inlet guide for 2" inches pipe



Ref: 140-11-01-00509

Inlet guide for 2" inches pipe

Weight: 2,4 Kg

- ▶ Inlet guide for 2" 1/2 inches pipe



Ref: 140-11-01-00510

Inlet guide for 2" 1/2 inches pipe

Weight: 2,2 Kg

2. Elements identification

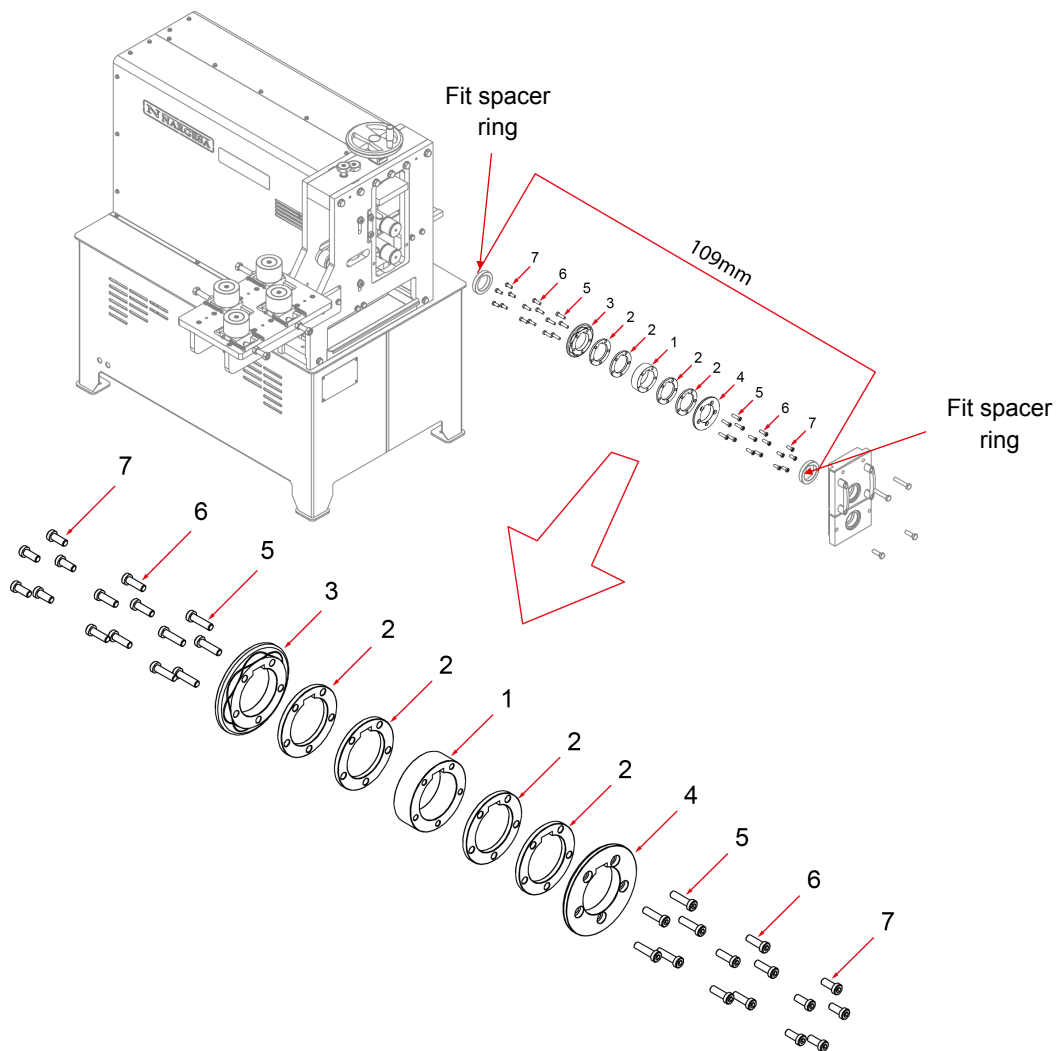
Sectioned rollers for pipe embossing have been designed to work on different pipe sizes with one only set of rollers.

2.1. Upper roller

IMPORTANT: In order to achieve a correct use of the machine, it is remarkably essential to place both fit spacer rings, one at each end of the embossing roller, so the total length of the set always remains 109mm.



HAZARD: Never surpass 109mm as maximum length



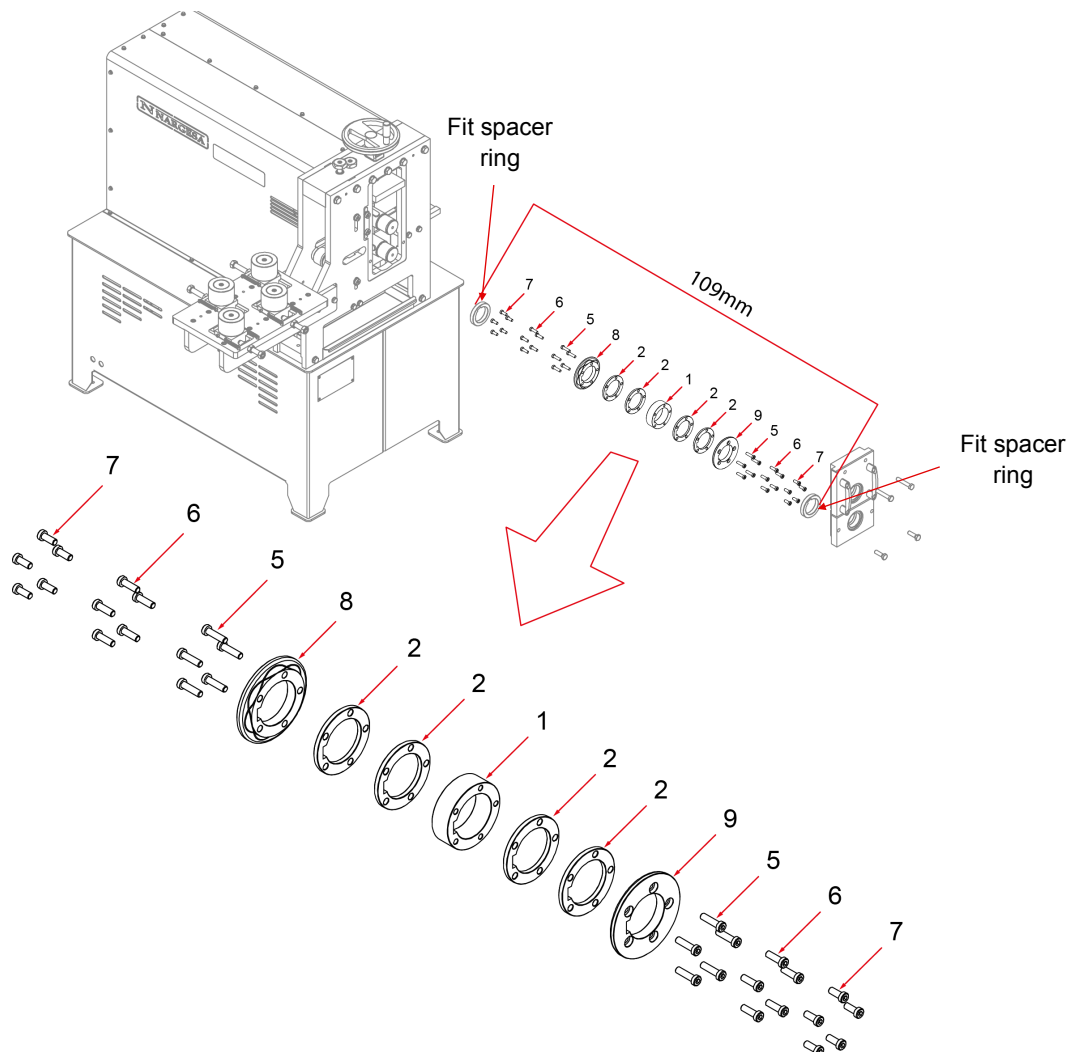
1	125-11-01-00016	SPACER 27,1 mm	1
2	125-11-01-00017	SPACER 6,25 mm	4
3	125-11-01-00014	LATERAL UPPER INNER ROLLER PIPE 1"1/2, 2" AND 2"1/2	1
4	125-11-01-00015	LATERAL UPPER OUTER ROLLER PIPE 1"1/2, 2" AND 2"1/2	1
5	020-D6912-M8X30	ALLEN SMALL HEADED SCREW DIN 6912 M8X30	10
6	020-D6912-M8X25	ALLEN SMALL HEADED SCREW DIN 6912 M8X25	10
7	020-D6912-M8X20	ALLEN SMALL HEADED SCREW DIN 6912 M8X20	10

2.2. Lower roller

IMPORTANT: In order to achieve a correct use of the machine, it is remarkably essential to place both fit spacer rings, one at each end of the embossing roller, so the total length of the set always remains 109mm.



HAZARD: Never surpass 109mm as maximum length



1	125-11-01-00016	SPACER 27,1 mm	1
2	125-11-01-00017	SPACER 6,25 mm	4
5	020-D6912-M8X30	ALLEN SMALL HEADED SCREW DIN 6912 M8X30	10
6	020-D6912-M8X25	ALLEN SMALL HEADED SCREW DIN 6912 M8X25	10
7	020-D6912-M8X20	ALLEN SMALL HEADED SCREW DIN 6912 M8X20	10
8	125-11-01-00024	LATERAL LOWER INNER ROLLER PIPE 1"1/2, 2" AND 2"1/2	1
9	125-11-01-00025	LATERAL LOWER OUTER ROLLER PIPE 1"1/2, 2" AND 2"1/2	1

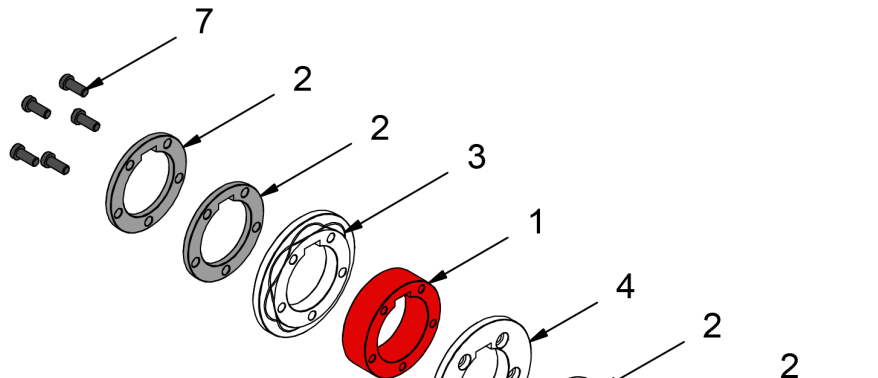
3. Rollers assembling

We'll use the different rollers sections depending on the size of the pipe to be embossed.

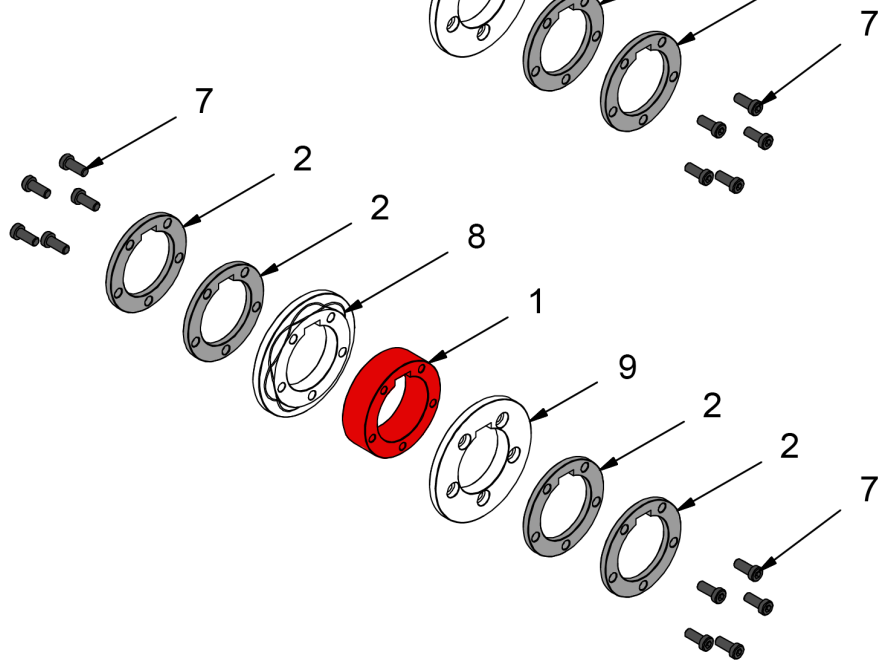
Then we'll detail every element used for each pipe size, always including sections 3 and 4 (Upper roller) or 8 and 9 (Lower roller) to these sets, which are the ones to perform the embossing operation as such.

3.1. Rollers assembling for 1" 1/2 inches pipe

Upper roller

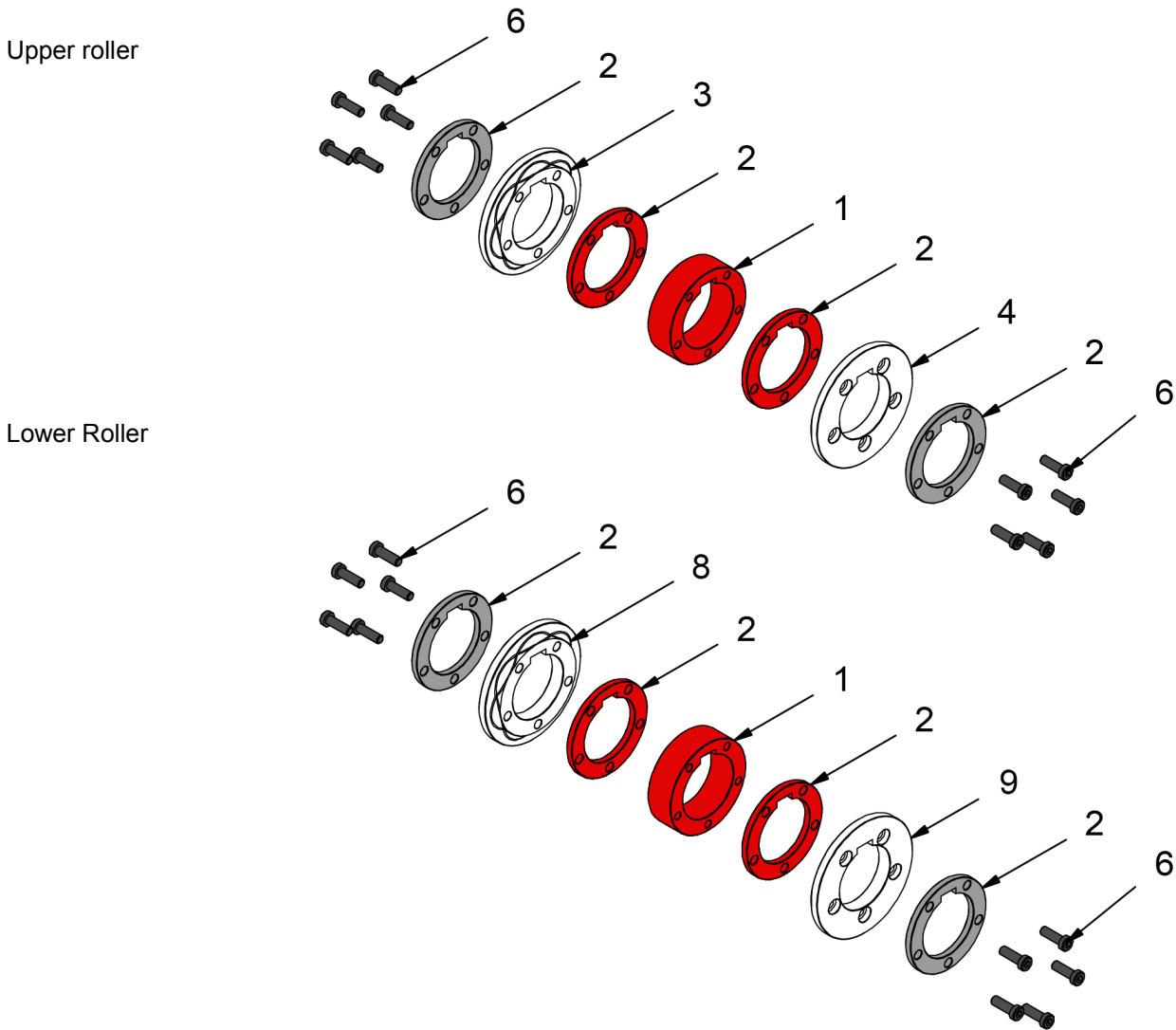


Lower Roller



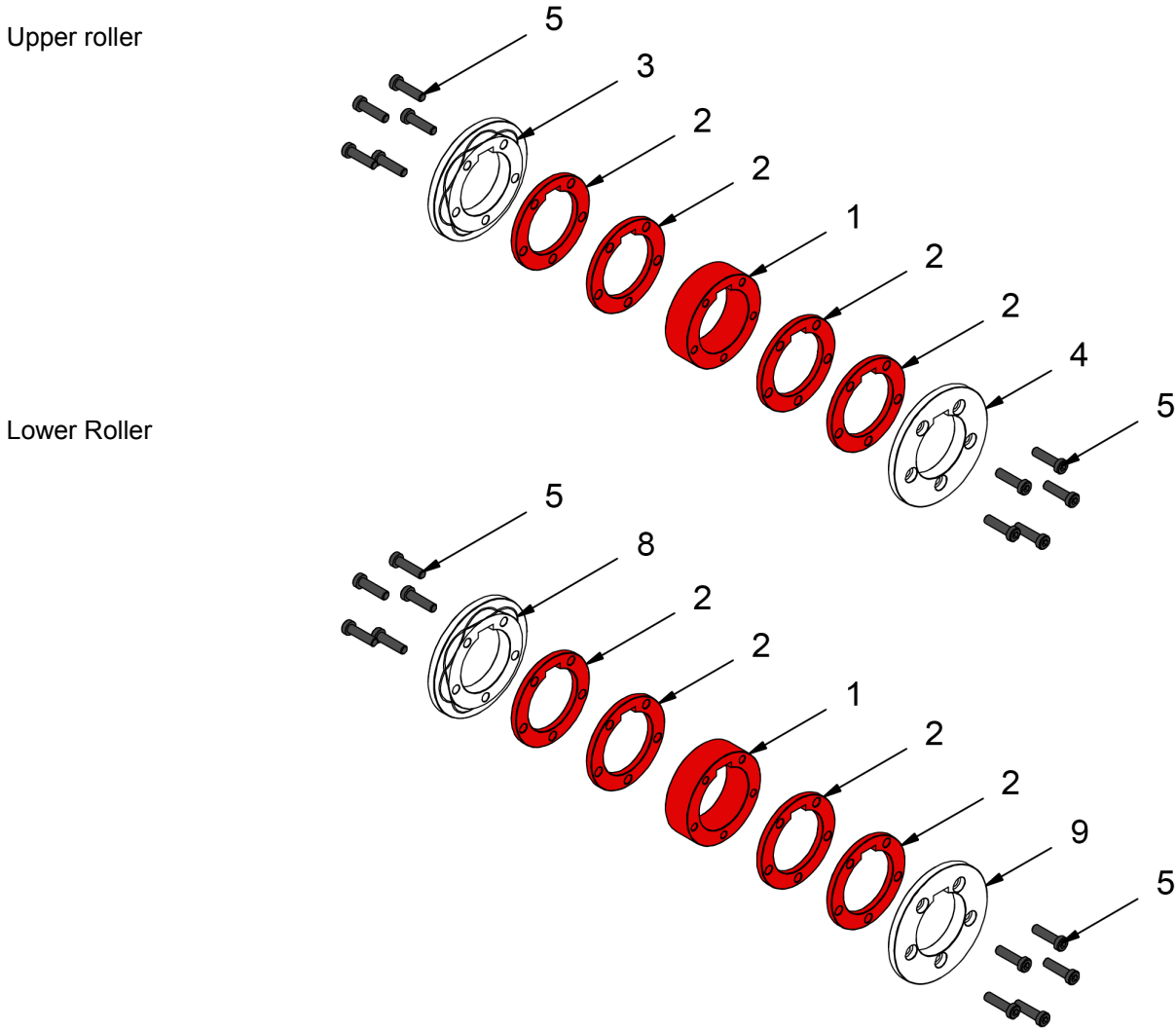
	INSIDE	1	125-11-01-00016	SPACER 27,1 mm
	EXTERIOR	2	125-11-01-00017	SPACER 6,25 mm
	EXTERIOR	2	125-11-01-00017	SPACER 6,25 mm
	SCREWS	7	020-D6912-M8X20	ALLEN SMALL HEADED SCREW DIN 6912 M8X20
		3	125-11-01-00014	LATERAL UPPER INNER ROLLER PIPE 1"1/2, 2" AND 2"1/2
		4	125-11-01-00015	LATERAL UPPER OUTER ROLLER PIPE 1"1/2, 2" AND 2"1/2
		8	125-11-01-00024	LATERAL LOWER INNER ROLLER PIPE 1"1/2, 2" AND 2"1/2
		9	125-11-01-00025	LATERAL LOWER OUTER ROLLER PIPE 1"1/2, 2" AND 2"1/2

3.2. Rollers assembling for 2" inches pipe



	INSIDE	1	125-11-01-00016	SPACER 27,1 mm
	INSIDE	2	125-11-01-00017	SPACER 6,25 mm
	EXTERIOR	2	125-11-01-00017	SPACER 6,25 mm
	SCREWS	6	020-D6912-M8X25	ALLEN SMALL HEADED SCREW DIN 6912 M8X25
		3	125-11-01-00014	LATERAL UPPER INNER ROLLER PIPE 1"1/2, 2" AND 2"1/2
		4	125-11-01-00015	LATERAL UPPER OUTER ROLLER PIPE 1"1/2, 2" AND 2"1/2
		8	125-11-01-00024	LATERAL LOWER INNER ROLLER PIPE 1"1/2, 2" AND 2"1/2
		9	125-11-01-00025	LATERAL LOWER OUTER ROLLER PIPE 1"1/2, 2" AND 2"1/2

3.3. Rollers assembling for 2" 1/2 inches pipe



	INSIDE	1	125-11-01-00016	SPACER 27,1 mm
	INSIDE	2	125-11-01-00017	SPACER 6,25 mm
	INSIDE	2	125-11-01-00017	SPACER 6,25 mm
	SCREWS	5	020-D6912-M8X30	ALLEN SMALL HEADED SCREW DIN 6912 M8X30
		3	125-11-01-00014	LATERAL UPPER INNER ROLLER PIPE 1"1/2, 2" AND 2"1/2
		4	125-11-01-00015	LATERAL UPPER OUTER ROLLER PIPE 1"1/2, 2" AND 2"1/2
		8	125-11-01-00024	LATERAL LOWER INNER ROLLER PIPE 1"1/2, 2" AND 2"1/2
		9	125-11-01-00025	LATERAL LOWER OUTER ROLLER PIPE 1"1/2, 2" AND 2"1/2

4. Our range of rollers for pipe embossing

- ▶ Set of embossing rollers for 25 mm or 1", 30 mm or 1" 1/4, 35 and 40 mm pipes



Ref: 140-11-01-00500

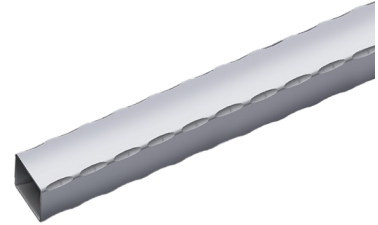
Set of sectioned rollers to emboss different square or rectangular pipe sizes with the same set. Adjustable to the following pipes:

Square pipes: 25mm or 1", 30mm or 1" 1/4, 35 and 40mm

Rectangular pipes: 25x20mm or 1"x3/4", 30x20mm or 1"1/4x3/4", 30x25mm, 35x20mm, 35x25mm, 40x20mm, 40x25mm, 40x30mm, 40x35mm

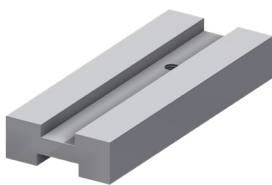
Guide 140-11-01-00501 or 140-11-01-00502 is required

Ask the manufacturer about different dimensions



Set per machine	Material minimum thickness suggested by manufacturer	Weight
1	3 mm	12 Kg

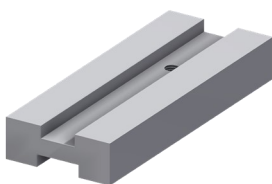
- ▶ Inlet guide for 25 mm or 1" and 30 mm or 1" 1/4 Pipe



Ref: 140-11-01-00501

Inlet guide for 25 mm or 1" and 30 mm or 1" 1/4 pipe
Weight: 3 Kg

- ▶ Inlet guide for 35 and 40 mm pipe

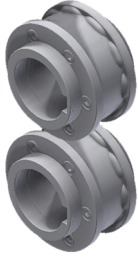


Ref: 140-11-01-00502

Inlet guide for 35 and 40 mm pipe
Weight: 2,8 Kg

▶ Set of embossing rollers for 50 and 60mm pipes

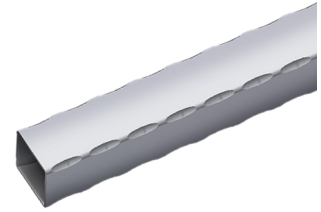
Ref: 140-11-01-00503



Set of sectioned rollers to emboss different square or rectangular pipe sizes with the same set. Adjustable to the following pipes:

Square pipes: 50mm or 60mm

Rectangular pipes: 50x20mm, 50x25mm, 50x30mm, 50x35mm, 50x40mm, 50x45mm, 60x20mm, 60x25mm, 60x30mm, 60x35mm, 60x40mm, 60x45mm, 60x50mm or 60x55mm



Guide 140-11-01-00505 or 140-11-01-00506 is required

Ask the manufacturer about different dimensions

Set per machine	Material minimum thickness suggested by manufaturer	Weight
1	3 mm	6 Kg

▶ Inlet guide for 50 mm pipe



Ref: 140-11-01-00505

Inlet guide for 50 mm pipe

Weight: 2,4 Kg

▶ Inlet guide for 60 mm pipe



Ref: 140-11-01-00506

Inlet guide for 60 mm pipe

Weight: 2,2 Kg