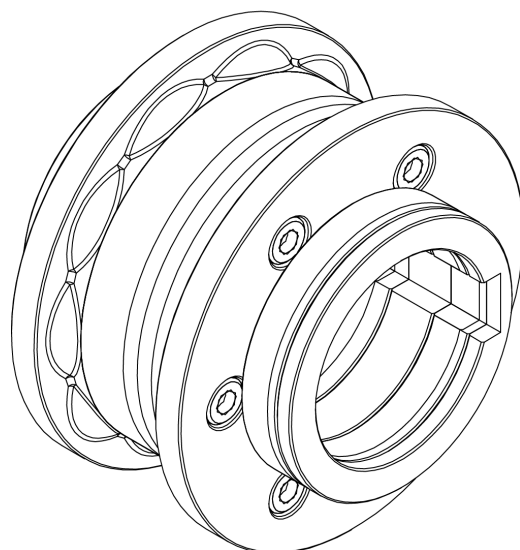
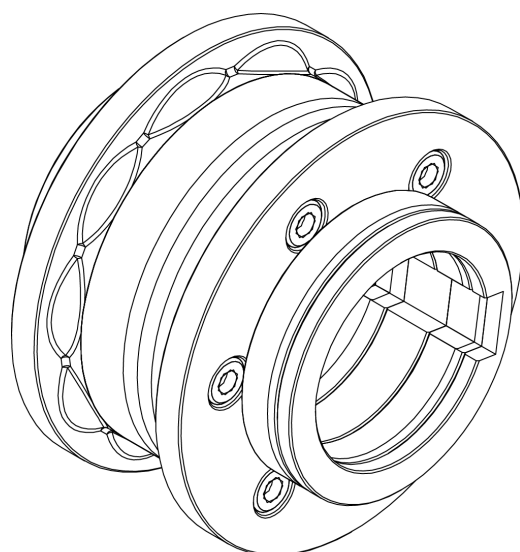


**Set of embossing rollers for 25 mm or 1"
30 mm or 1" 1/4, 35 and 40 mm pipes**

NOA60



TECHNICAL FEATURES

PRADA NARGESA, S.L

Ctra. de Garrigàs a Sant Miquel s/n
17476 Palau de Santa Eulàlia (GIRONA) SPAIN
Tel. 972 568085 - nargesa@nargesa.com
www.nargesa.com

INDEX

1. Tooling description	3
2. Elements identification	4
3. Rollers assembling	5
3.1. Rollers assembling for 25mm or 1" pipe	5
3.2. Rollers assembling for 30mm or 1" 1/4 pipe	6
3.3. Rollers assembling for 35mm pipe	7
3.4. Rollers assembling for 40mm pipe	8
4. Our range of rollers for pipe embossing	9

1. Tooling description

- ▶ Set of embossing rollers for 25 mm or 1", 30 mm or 1" 1/4, 35 and 40 mm pipes



Ref: 140-11-01-00500

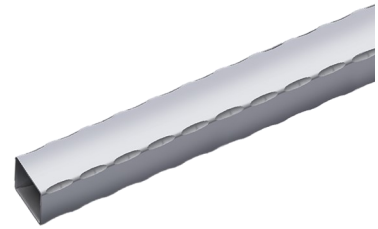
Set of sectioned rollers to emboss different square or rectangular pipe sizes with the same set. Adjustable to the following pipes:

Square pipes: 25mm or 1", 30mm or 1" 1/4, 35 and 40mm

Rectangular pipes: 25x20mm or 1"x3/4", 30x20mm or 1"1/4x3/4", 30x25mm, 35x20mm, 35x25mm, 40x20mm, 40x25mm, 40x30mm, 40x35mm

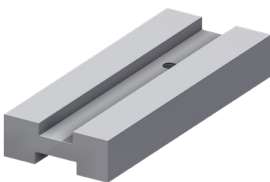
Guide 140-11-01-00501 or 140-11-01-00502 is required

Ask the manufacturer about different dimensions



Set per machine	Material minimum thickness suggested by manufaturer	Weight
1	3 mm	12 Kg

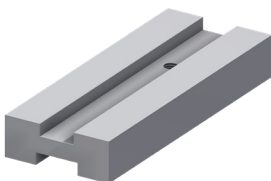
- ▶ Inlet guide for 25 mm or 1" and 30 mm or 1" 1/4 Pipe



Ref: 140-11-01-00501

Inlet guide for 25 mm or 1" and 30 mm or 1" 1/4 pipe
Weight: 3 Kg

- ▶ Inlet guide for 35 and 40 mm pipe

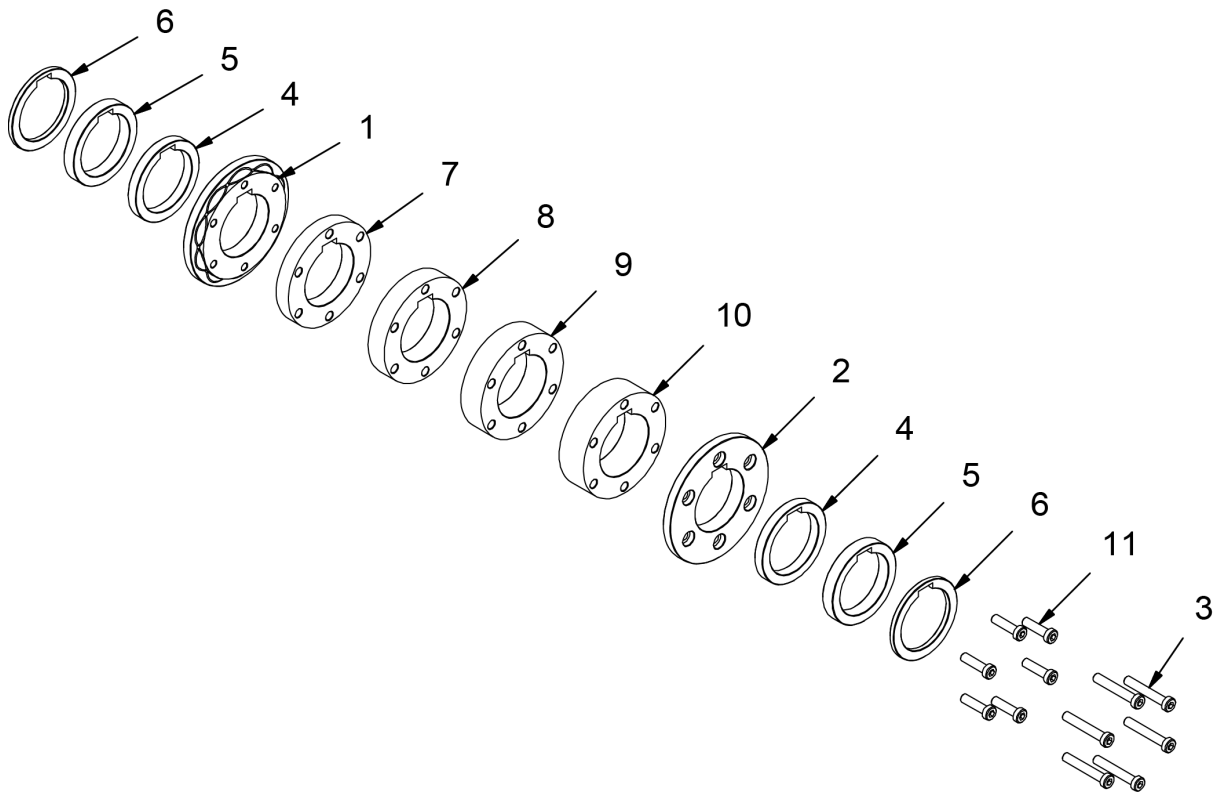


Ref: 140-11-01-00502

Inlet guide for 35 and 40 mm pipe
Weight: 2,8 Kg

2. Elements identification

Sectioned rollers for pipe embossing have been designed to work on different pipe sizes with one only set of rollers.



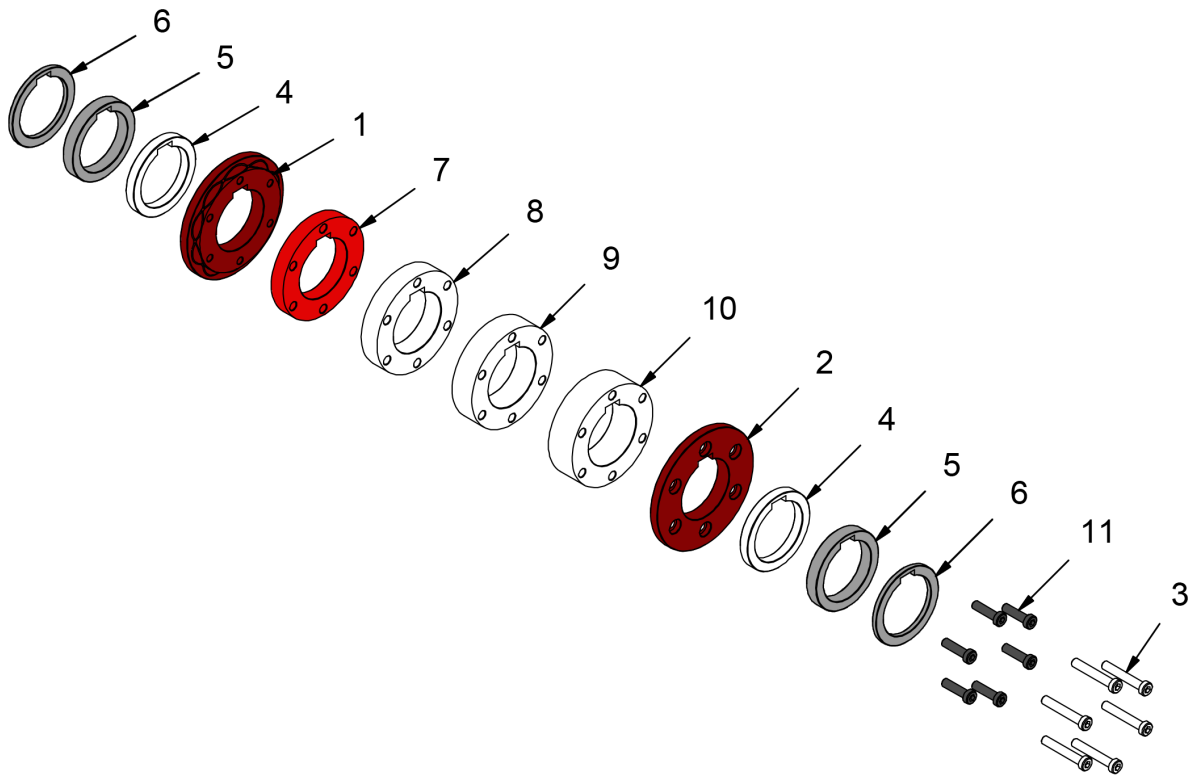
1	125-11-01-00005	LATERAL 1 ROLLER PIPE 25-40	1
2	125-11-01-00006	LATERAL 2 ROLLER PIPE 25-40	1
3	020-D6912-M8X50	ALLEN SMALL HEADED SCREW DIN 6912 M8X50	6
4	125-11-01-00011	10 mm SECTIONED PIPE SPACER 25-40	2
5	125-11-01-00012	12.5 mm SECTIONED PIPE SPACER 25-40	2
6	125-11-01-00013	5 mm SECTIONED PIPE SPACER 25-40	2
7	125-11-01-00008	15 mm SECTIONED SPACER ROLLER 25	1
8	125-11-01-00009	20 mm SECTIONED SPACER ROLLER 30	1
9	125-11-01-00010	25 mm SECTIONED SPACER ROLLER 35	1
10	125-11-01-00007	28.5 mm SECTIONED SPACER ROLLER 40	1
11	020-D6912-M8X30	ALLEN SMALL HEADED SCREW DIN 6912 M8X30	6

3. Rollers assembling

We'll use the different rollers sections depending on the size of the pipe to be embossed.

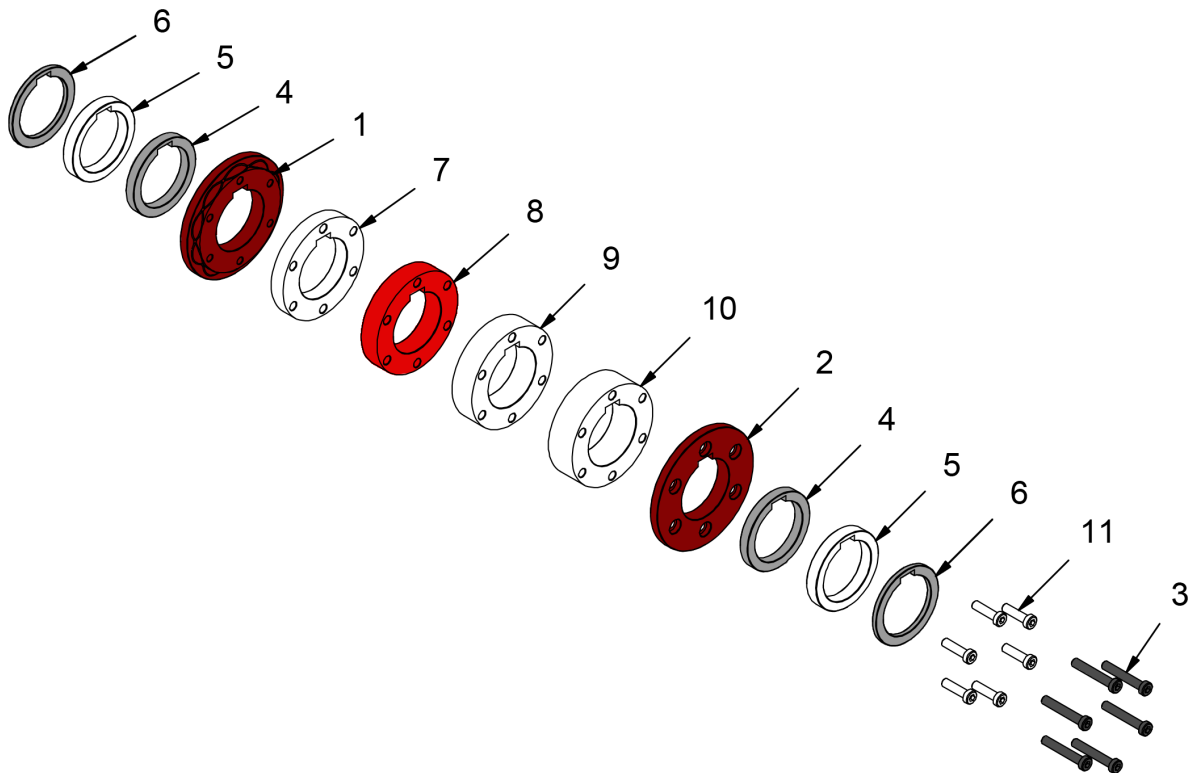
Then we'll detail every element used for each pipe size, always including sections 1 and 2 to these sets, which are the ones to perform the embossing operation as such.




3.1. Rollers assembling for 25mm or 1" pipe



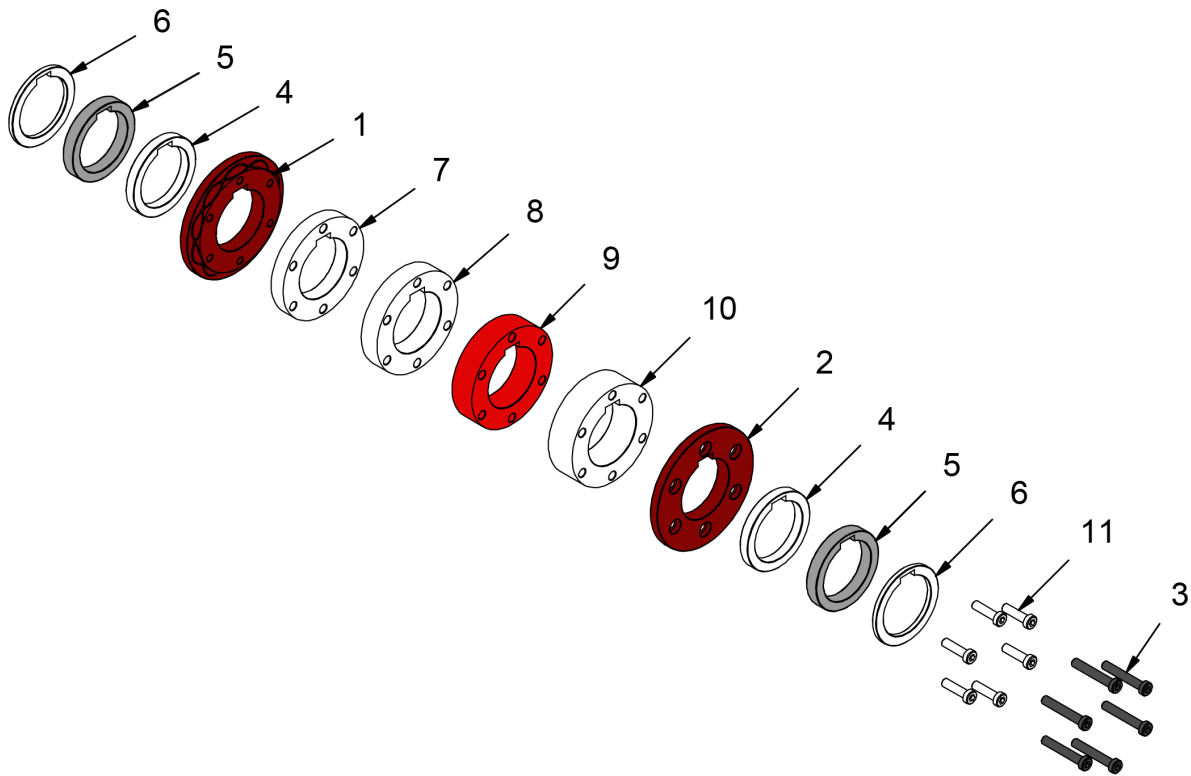
- Inside 15 mm SECTIONED SPACER ROLLER 25
- Exterior 12.5 mm SECTIONED PIPE SPACER 25-40
- 5 mm SECTIONED PIPE SPACER 25-40
- Screws ALLEN SMALL HEADED SCREW DIN 6912 M8X30

3.2. Rollers assembling for 30mm or 1" 1/4 pipe



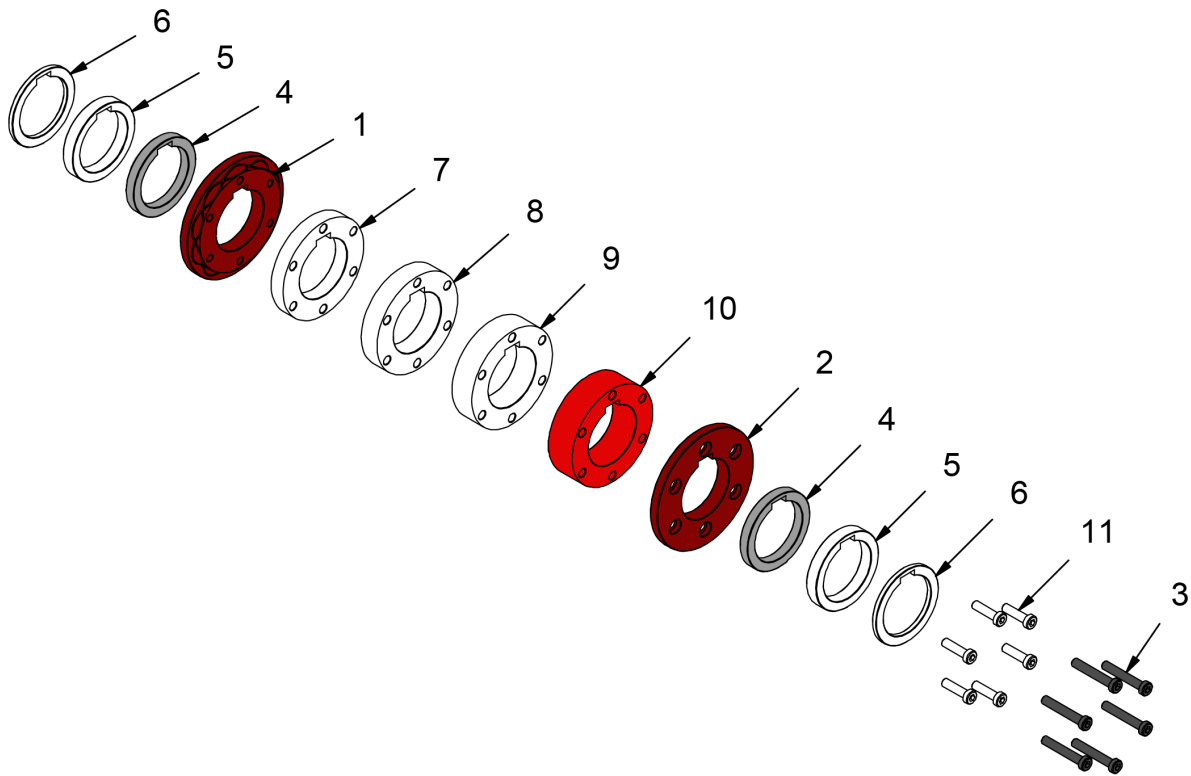
-  Inside 20 mm SECTIONED SPACER ROLLER 30
-  Exterior 10 mm SECTIONED PIPE SPACER 25-40
- 5 mm SECTIONED PIPE SPACER 25-40
-  Screws ALLEN SMALL HEADED SCREW DIN 6912 M8X50

3.3. Rollers assembling for 35mm pipe



- Inside 25 mm SECTIONED SPACER ROLLER 35
- Exterior 12.5 mm SECTIONED PIPE SPACER 25-40
- Screws ALLEN SMALL HEADED SCREW DIN 6912 M8X50

3.4. Rollers assembling for 40mm pipe



- Inside 28.5 mm SECTIONED SPACER ROLLER 40
- Exterior 10 mm SECTIONED PIPE SPACER 25-40
- Screws ALLEN SMALL HEADED SCREW DIN 6912 M8X50

4. Our range of rollers for pipe embossing

- ▶ Set of embossing rollers for 50 and 60mm pipes

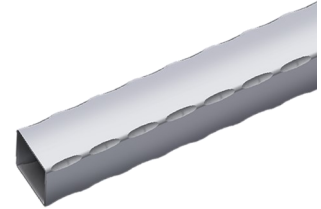
Ref: 140-11-01-00503



Set of sectioned rollers to emboss different square or rectangular pipe sizes with the same set. Adjustable to the following pipes:

Square pipes: 50mm or 60mm

Rectangular pipes: 50x20mm, 50x25mm, 50x30mm, 50x35mm, 50x40mm, 50x45mm, 60x20mm, 60x25mm, 60x30mm, 60x35mm, 60x40mm, 60x45mm, 60x50mm or 60x55mm



Guide 140-11-01-00505 or 140-11-01-00506 is required

Ask the manufacturer about different dimensions

Set per machine	Material minimum thickness suggested by manufacturer	Weight
1	3 mm	6 Kg

- ▶ Inlet guide for 50 mm pipe



Ref: 140-11-01-00505

Inlet guide for 50 mm pipe

Weight: 2,4 Kg

- ▶ Inlet guide for 60 mm pipe



Ref: 140-11-01-00506

Inlet guide for 60 mm pipe

Weight: 2,2 Kg

- ▶ Set of embossing rollers for 1" 1/2, 2" and 2" 1/2 inches pipes

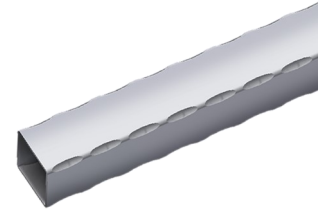
Ref: 140-11-01-00507



Set of sectioned rollers to emboss different square or rectangular pipe sizes with the same set. Adjustable to the following pipes:

Square pipes: 1" 1/2, 2" and 2" 1/2 inches

Rectangular pipes: 1"1/2x3/4", 1"1/2x1", 2"x1", 2"x1"1/4, 2"x1"1/2, 2"1/2x1"1/2 inches



Guide 140-11-01-00508, 140-11-01-00509 or 140-11-01-00510 is required

Ask the manufacturer about different dimensions

Set per machine	Material minimum thickness suggested by manufacturer	Weight
1	3 mm	6 Kg

- ▶ Inlet guide for 1" 1/2 inches pipe



Ref: 140-11-01-00508

Inlet guide for 1" 1/2 inches pipe

Weight: 2,6 Kg

- ▶ Inlet guide for 2" inches pipe



Ref: 140-11-01-00509

Inlet guide for 2" inches pipe

Weight: 2,4 Kg

- ▶ Inlet guide for 2" 1/2 inches pipe



Ref: 140-11-01-00510

Inlet guide for 2" 1/2 inches pipe

Weight: 2,2 Kg