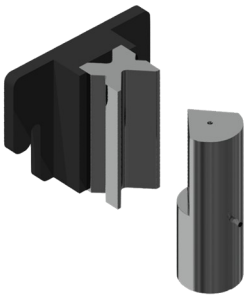


Folding die at 100mm · V16, 22 35 50 mm. PP200




Folding or bending die up to 100mm with 4 openings (16, 22, 35, 50mm) and a punch of 88°. This multi-V die allows 1mm up to 8mm sheet to be folded. The 70mm outer die diameter punch allows to make completely closed shapes to a minimum of 75mm inner wing.



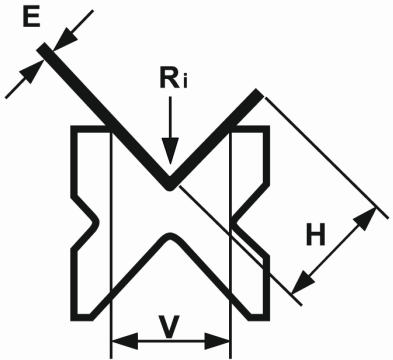
- V 16: Sheet from 1 to 3mm
- V 22: Sheet from 2 to 4mm
- V 35: Sheet from 3 to 6mm
- V 50: Sheet from 4 to 8mm
- MAX. FOLDING LENGTH: 100mm
- MAX. FOLDING THICKNESS: 8mm

Standard tooling provided along with the machine.

		Ton/m																		
V	H	Ri	E = mm 42 - 48 kg/mm ²																	
			0.5	0.8	1	1.2	1.5	1.8	2	2.5	3	4	5	6	8	10	12	15	20	25
4	2.6	0.7	4	10.5																
6	3.9	0.9	2.5	6.5	10															
8	5.2	1.5	2	5.5	8	11.5	18													
10	6.5	1.7		4.1	6.5	9.5	14.5	21	26											
12	7.8	2			5.5	8	12	17.5	21.5	33.5										
16	10.4	2.7				6	9	13	16	25	36									
20	13	3.4					7.5	10.5	13	20	29	52								
26	18	4.2						8.5	10.5	16	23	41	64							
30	20	5								14	19	34	54	77						
35	23	6									17	30	46	66						
42	27	6.7									15	26	40	58	103					
45	29	7.5										23	36	52	91					
50	32	8.5										21	32	46	82	128				
60	39	10											27	39	69	107				
70	45	11.7												33	59	92	132			
80	52	13.5												29	52	80	116	180		
90	58	15													46	71	103	160		
100	65	17													41	64	93	144	256	
110	71	18.5														59	84	131	233	
120	78	20														54	77	120	213	
140	91	24															66	103	183	
170	110	29															55	85	151	
200	130	35																72	128	200



www.nargesa.com



PRADA NARGESA S.L. • SPAIN • Tel. +0034 972568085 • nargesa@nargesa.com